



XF Series Diesel Pneumatic Tire Forklift

with capacities of 4,000 to 7,000lbs

The World of Hangcha



Simple/ Solid/ Smart

In the XF Series, Hangcha brought together the experience of more than 30 years building forklifts and the latest forklift technologies, the result is superior in efficiency, environmental friendliness, comfortable operation, reliability, safety. The XF Series, produced from careful research and development, represent a true solution to needs from environment, operator and owner.

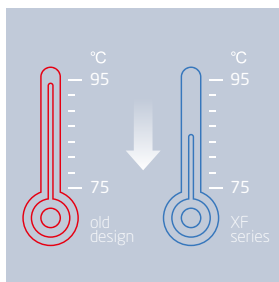




Productivity

Dynamic load sensing hydraulic steering system, Efficiency lighting system, lower fuel consumption, combine to provide increased productivity and reduced operating costs.

The new Dynamic load sensing hydraulic steering system contributes to reduce loss of hydraulic and improve energy efficiency.



Hydraulic oil
balanced temperature
(2.5T 4TNE98)

The new efficiency lighting system employs LED illuminant and new type reflector to reduce energy consumption, improve significantly illumination performance and prolong work time.



Comfortable Operation



In developing the XF Series, comfort and ease of operation is carefully considered, for example, to improve vibration levels, compound engine damper and full floating power train are adopted. Comfortable operating environments for operator also contribute to increased productivity.



In addition to rubber damper between frames and steering axle, compound engine damper and full floating power train achieve flexible connection between frames and driving system, as a result, traveling vibrations and vibrations from the driving system are significantly reduced.



The enlarged capacity of optimized exhaust muffler, the intake muffler and the noise shield technologies provide significantly lower noise levels.

1. The new, relocated easy-to-see LCD meter lets the operator check on all aspects of operational status at a glance.
2. The new automobile-style light/turn-signal lever and forward-reverse lever are ergonomically designed and arranged to improve comfort and productivity.
3. The small diameter steering wheel with tilt adjustment provides the ideal operating position. The superior responsiveness of the steering wheel optimizes maneuverability even in narrow spaces.
4. The parking brake is specially developed. The operational force is reduced by 30%.
5. The automobile-style suspended pedals provide more ergonomic operation.

Environmental Friendliness



A lineup of powerful and clean engines and environment friendly materials help to reduce the output of undesirable substances over the lifetime of the truck, while creating a cleaner work environment.

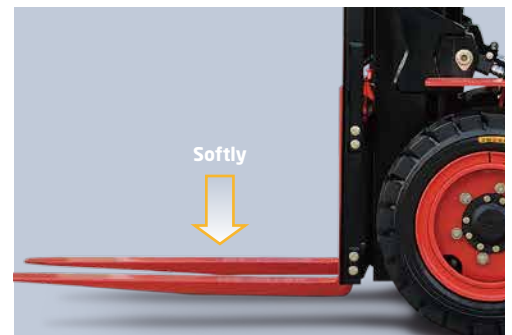
Each model employs a specially developed engine for the optimum balance of power and superior environmental performance. All engines are in compliance with EU stage-III control regulation.

The environment friendly materials, such as nonasbestos brake shoe and new type sealing gasket, are adopted entirely to pursue environmental safety.



Comfortable Operation

Optimal visibility in all directions create the best conditions for high productivity through relaxed and safe working.



The extra foot space is provided to reduce operator fatigue significantly. The new wide-open, non-slip step makes getting in and out easy and safe.

The optional Electro-hydraulic proportional control system contributes more sensitive and precise load handling. The easy-to-operate levers provide total load handling operation. An armrest is provided to reduce fatigue.

In addition to the soft landing system, the soft lifting system is adopted (front lifting cylinders of triplex mast and full free duplex mast), as a result, the noise and shock of the mast significantly decreases.

Reliability

By focusing on enhancing reliability, reducing downtime, the XF series is able to make the greater productivity for customer.



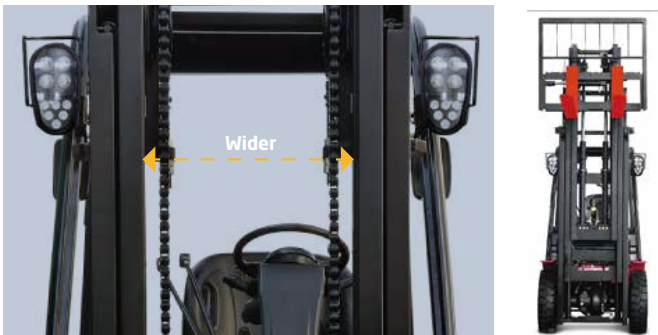
The new aluminum alloy transmission with full floating structure features excellent heat dissipation capability, more and thicker disc meet the most demanding applications.



The new vehicle controller integrates all electrical components, features excellent durability for temperature, water and vibration for most demanding operation.



The new stamped air cleaner featuring tangential intake, double seal with safety filter is durable, corrosion-free and vibration-resistant, provides better filter efficiency and lower intake resistance than the previous.



The developed front lifting cylinders with smaller outer diameter give the operator superior forward visibility.

The double lifting cylinders provide better forward visibility.



XF series features rugged design, stamped frame and engine hood, stamped instrument panel and head guard, heavy profile rail mast combine to provide excellent rigidity, which ensures outstanding reliability even in heavy-duty work.



Extra capacity combined radiator with serpentine wave and optimized heat dissipation channel enhance the heat dissipation capability to keep engine reliability even in heavy-duty applications.

Easy Maintenance



Careful design facilitates inspection and servicing. Easy maintenance reduces the amount of downtime and helps to reduce cost also.

The cover on the Panel can be lifted up simply to check the brake fluid.

The two-piece design makes the floorboard easy to lift and remove for access to the power train.

The easy-to-operate latch provides quick access to the engine compartment.

The fasteners of the radiator cover can be turned easily by hand to enable quick inspections or servicing.

Safety

A wide range of technologies are applied to ensure absolute safety for both the operator and those in the surrounding.



The locking device of the engine hood damper and parking brake help add to safety.



An optional rear-pillar assist grip with a horn button enhances safety of operator while traveling in reverse.



1. The operator presence sensing system incorporates lifting/tilting and traveling locking function. When the operator leaves the seat, the system automatically locks lifting / tilting and disables traveling to ensure safety.
2. A throttling device is adopted to avoid the mast being out of control even some pipes are broken.

Standards

Transmission	Steering	Chassiss	Control	Hydraulic
<div><div>/ Suspended transmission</div><div>/ Oil filter</div><div>/ Dipstick</div><div>/ Oil cooler</div><div>/ Non-asbesttos brake</div></div>	<div><div>/ Full hydraulic power steering</div><div>/ Smaller diameter steering wheel</div><div>/ Adjuster of steering wheel</div></div>	<div><div>/ Skidproof pedal</div><div>/ Rubber pedal</div><div>/ Engine hood spring</div></div>	<div><div>/ Power steering</div><div>/ Suspension pedal</div><div>/ Integrated combination switch</div><div>/ Cable parking brake</div></div>	<div><div>/ Dynamic load sending control valve (Diesel IC)</div><div>/ Hydraulic oil filter</div><div>/ Tilt cylender self-locking valve</div><div>/ Hydraulic oil dipstick</div></div>

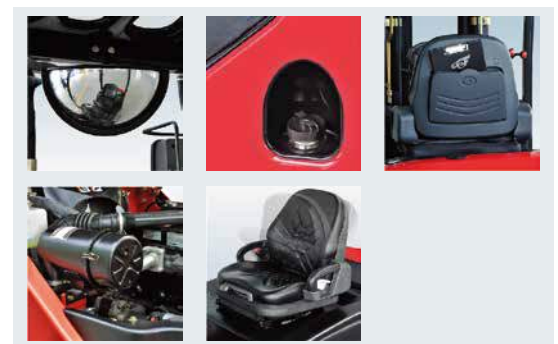
Truck	Power	Electronics	Mast
<div><div>/ Traction device</div><div>/ Handhilds</div><div>/ Standard seat</div><div>/ Standard overhead guard</div><div>/ Waterproof cover on the guard</div><div>/ Back view mirror</div><div>/ Pneumatic tyres</div><div>/ Toolbox</div></div>	<div><div>/ Big capacity aluminum radiator</div><div>/ Little tank</div><div>/ Whirlwind air cleaner</div><div>/ Safety filter</div><div>/ High-efficient intake muffler</div><div>/ High-efficient exhaust muffler</div></div>	<div><div>/ LED headlamp</div><div>/ High-efficient LED rear lights</div><div>/ Service-free start battery</div><div>/ Combination controller</div><div>/ LCD display</div><div>/ Neutual switch</div><div>/ Timee meter</div><div>/ Fuel gauge</div><div>/ Water temperature gauge</div><div>/ Pre-heat indicator</div><div>/ Charging indicator</div><div>/ Engine fuel pressure warning</div><div>/ Transmission oil pressure warning</div><div>/ Horn</div><div>/ Reversing uzzer</div><div>/ Power off</div></div>	<div><div>/ Standard wide view duplex mast</div><div>/ Standard forks</div><div>/ Standard fork carriage</div><div>/ Standard load back rest</div><div>/ Mast speed limiting valve</div><div>/ Load safety valve</div><div>/ Mast down buffer device</div><div>/ Mast up buffer device</div><div>/ Side roller</div></div>

Options

Truck	Transmission	Power	Hydraulic	Electronics	Mast
<ul style="list-style-type: none"> / Cabin / Cabin heater / Front window / Super elastic tyre / No-mark tyre (white/green) / Suspension seat / Extinguisher / Cover of tilt cylender / Heightening overhead guard / Reversing assist grip / Special given color / Seat with sensing system / Boot for tilt cylinder / Counter weight net 	<ul style="list-style-type: none"> / 2-D wheel / Wet brake system 	<ul style="list-style-type: none"> / Big capacity copper radiator / High-positioned exhaust system / Middle-positioned exhaust system / Air pre-cleaner / Net cover of radiator / Sparkle arrester / Purified exhaust system / Fan protector 	<ul style="list-style-type: none"> / Auxiliary hydraulic valve / Electro-hydraulic proportional control system / Return oil filter 	<ul style="list-style-type: none"> / OBD / Front working light / Rear working light / Warning lamp / Oil-water seperator warning 	<ul style="list-style-type: none"> / Duplex wide view free-lift mast / Triplex wide view free-lift mast / Triplex wide view 4-cylinder free-lift mast / Special forks / Wider fork carriage / Wider load back rest

Optional Attachments

- / Paper roll clamp
- / Rotating bale clamp
- / Load stabilizer
- / Multi-drum clamp
- / Bale clamp
- / Drum clamp
- / Dumping clamp
- / Crane arm
- / String Pole
- / Sideshifter
- / Rotating forks
- / Fork extensioner
- / Load release device
- / Carton clamp
- / Push-pull device
- / Bucket
- / Hook
- / Lengthened fork



XF series 4,000~7,000 lb forklift specification

Distinguishing mark	1.1	Manufacturer		HANGCHA GROUP CO.,LTD.			
	1.2	Manufacturer's type designation		CPCD20-XW33F	CPCD25-XW33F	CPCD30-XW33F	CPCD35-XW33F
	1.3	Drive: electric (battery or mains), diesel, petrol, fuel gas		Diesel	Diesel	Diesel	Diesel
	1.5	Rated capacity/rated load	Q (lb)	4000	5000	6000	7000
	1.6	Load centre distance	c (in)	24	24	24	24
	1.8	Load distance, centre of drive axle to fork	x (in)	18.3	18.3	18.9	19.1
		Rear overhang	in	16.3	19.3	21.7	24.2
	1.9	Wheelbase	y (in)	65.0	65.0	66.9	66.9
Weight	2.1	Service Weight	lb	7491	8283	9570	10351
	2.2	Axle loading, laden front/rear	lb	10351/1540	12045/1738	14190/1980	15961/2090
	2.3	Axle loading, unladen front/rear	lb	3542/3949	3432/4851	3850/5720	3784/6567
Tyres, chassis	3.2	Tyre size, front		7.00-12-12PR	7.00-12-12PR	28×9-15-14PR	28×9-15-14PR
	3.3	Tyre size, rear		6.00-9-10PR	6.00-9-10PR	6.50-10-10PR	6.50-10-10PR
	3.6	Tread, front	b ₁₀ (in)	38.0	38.0	39.6	39.6
	3.7	Tread, rear	b ₁₁ (in)	38.3	38.3	38.4	38.4
Dimensions	4.1	Tilt of mast/fork carriage forward/backward	α/β(°)	6/12	6/12	6/12	6/12
	4.2	Height, mast lowered	h ₁ (in)	80.1	80.1	80.7	85.2
	4.3	Free lift	h ₂ (in)	5.5	5.5	5.7	5.7
	4.4	Lift	h ₃ (in)	118.1	118.1	118.1	118.1
	4.5	Height, mast extended	h ₄ (in)	159.3	159.3	163.2	163.2
	4.7	Height of overhead guard (cabin)	h ₆ (in)	84.1(87.2*)	84.1(87.2*)	84.6(87.8*)	84.6(87.8*)
	4.20	Length to face of forks	l ₂ (in)	99.6	102.6	107.5	110.2
	4.21	Overall width	b ₁ (in)	45.5	45.5	48.2	48.2
	4.22	Fork dimensions ISO 2331	s/e/l (in)	1.6×4.8×42	1.6×4.8×42	1.8×4.8×42	2.0×4.8×42
	4.31	Ground clearance, laden, below mast	m ₁ (in)	4.5	4.5	5.1	5.1
	4.32	Ground clearance, centre of wheelbase	m ₂ (in)	5.9	5.9	6.5	6.5
	4.35	Turning radius	W _a (in)	85.8	88.4	92.7	95.1
		Min. right angle stacking aisle width (Add load length and clearance)	in	104.1	106.7	111.6	114.2
Performance data	5.1	Travel speed, laden/unladen	mph	(-/11.8)	(-/11.8)	(-/11.1)	(-/11.1)
	5.2	Lift speed, laden/unladen	ft/min	110.2/-	110.2/-	88.6/-	75.8/-
	5.3	Lowering speed, laden/unladen	ft/min	98.4/-	98.4/-	98.4/-	98.4/-
	5.5	Drawbar pull, laden/unladen	lbf	(4204/-)	(4204/-)	(4451/-)	(4451/-)
	5.7	Gradeability, laden/unladen*	%	(33/-)	(28/-)	(25/-)	(22/-)
Combustion-engine	7.1	Engine manufacturer/type		YANMAR/4TNE98	YANMAR/4TNE98	YANMAR/4TNE98	YANMAR/4TNE98
		Emission STD		T4i	T4i	T4i	T4i
	7.2	Engine power	kW	42.1	42.1	42.1	42.1
	7.3	Rated speed	r/min	2300	2300	2300	2300
	7.4	Number of cylinders/displacement	(-) / (in ³)	4/202.5	4/202.5	4/202.5	4/202.5
	7.10	Battery voltage/nominal capacity	V/Ah	12/60	12/60	12/60	12/60
		Rated torque	N·m/r/min	186/1700	186/1700	186/1700	186/1700
		Bore × stroke	in	3.9×4.3	3.9×4.3	3.9×4.3	3.9×4.3
		Transmissions Manufacturer		HANGCHA	HANGCHA	HANGCHA	HANGCHA
		Transmissions Type		Powershift	Powershift	Powershift	Powershift
		Stage FWD/RVS		1/1	1/1	1/1	1/1
Addition data	10.1	Operating pressure for attachments	bar	175	175	175	175
	10.4	Fuel tank capacity	gal	10.6	10.6	10.6	10.6

Note: *With suspension seat or cabin
* As a calculated value

4,000~5,000 lb XF series mast: (pneumatic)

Type	Model	Max. fork height	Overall height			Free lift		Front Overhang	Tilt range		Capacity			
			Lowered	Extended		Without backrest	With backrest		FWD	BWD	Load capacity at 24in			
				Without backrest	With backrest						Single tire		Dual tire	
											4000 lb	5000 lb	4000 lb	5000 lb
		in	in	in	in	in	in	in	(°)	(°)	lb	lb	lb	lb
Wide view mast	X25M330	129.9	86.0	155.9	171.1	5.5	5.5	18.3	6	12	4000	5000	4000	5000
	X25M350	137.8	90.0	163.8	178.9	5.5	5.5	18.3	6	12	4000	5000	4000	5000
Wide view full free duplex mast	X25U300	118.1	79.1	144.9	159.3	52.4	37.8	18.3	6	12	4000	5000	4000	5000
	X25U330	129.9	85.0	156.7	171.1	58.3	43.7	18.3	6	12	4000	5000	4000	5000
	X25U350	137.8	89.0	164.6	178.9	62.2	47.6	18.3	6	12	4000	5000	4000	5000
Wide view full free triplex mast	X25N430	169.3	82.7	196.9	210.4	55.1	41.5	18.9	6	6	3700	4400	3800	4700
	X25N450	177.2	84.6	205.9	220.3	57.9	43.5	18.9	6	6	3600	4100	3700	4400
	X25N470	185.0	86.6	211.8	226.2	59.8	45.5	18.9	6	6	3500	3800	3600	4100
	X25N500	196.9	90.6	223.6	238.0	63.8	49.4	18.9	6	6	3400	3500	3600	4100
	X25N550	216.5	98.4	243.3	257.7	71.7	57.3	18.9	3	6	2600	2800	3200	3800

With sideshifter minus 330 lb,with integral sideshifter minus 220 lb.

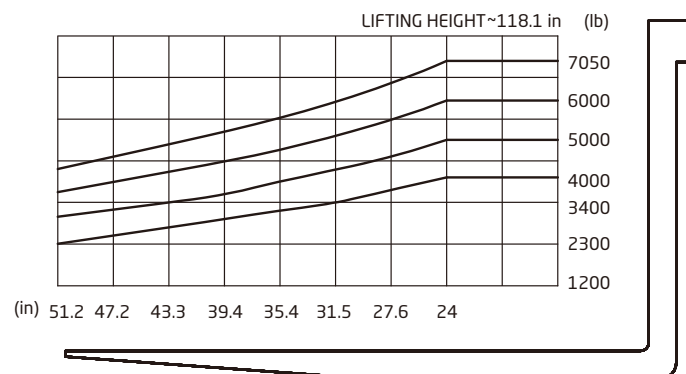
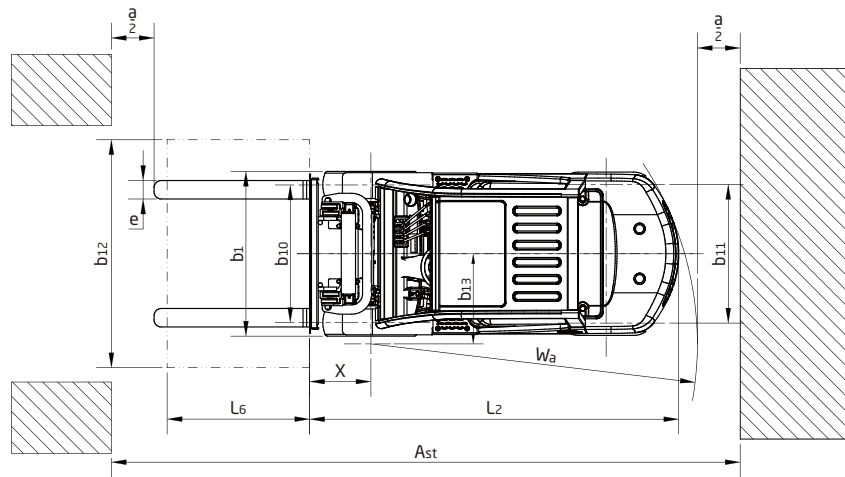
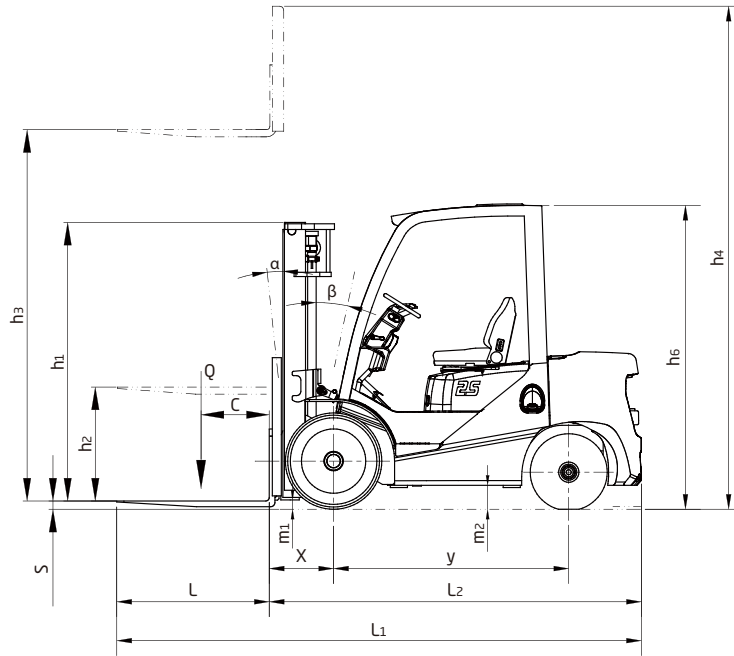
6,000~7,000 lb XF series mast: (pneumatic)

Type	Model	Max. fork height	Overall height							Free lift				Front Overhang (in)		Tilt range		Capacity			
			Lowered (in)	Extended				Load capacity at 24in													
				Without backrest(in)	With backrest(in)		Without backrest(in)	With backrest(in)		Single tire	Dual tire										
				6000lb	7000lb	6000lb	7000lb	6000lb	7000lb	6000lb	7000lb	6000lb	7000lb	6000lb	7000lb						
Wide view mast	X30/35M330	129.9	86.6	91.1	158.9	162.0	175.0	175.0	5.7	5.7	5.7	5.7	18.9	19.1	6	12	6000	7000	6000	7000	
	X30/35M350	137.8	90.6	95.1	166.7	169.9	182.9	182.9	5.7	5.7	5.7	5.7	18.9	19.1	6	12	6000	7000	6000	7000	
Wide view full free duplex mast	X30/35U300	118.1	81.9	85.8	147.8	150.8	163.2	163.2	52.2	53.1	36.8	40.7	18.9	18.9	6	12	6000	7000	6000	7000	
	X30/35U330	129.9	87.8	91.7	159.6	162.6	175.0	175.0	58.1	59.1	42.7	50.6	18.9	18.9	6	12	6000	7000	6000	7000	
	X30/35U350	137.8	91.7	95.7	167.5	170.5	182.9	182.9	62.0	63.0	46.7	54.5	18.9	18.9	6	12	6000	7000	6000	7000	
	X30/3N430	169.3	83.3	87.2	199.0	202.0	214.4	214.4	53.5	54.5	38.2	42.1	19.5	19.5	6	6	5500	6400	5800	6400	
Wide view full free triplex mast	X30/3N450	177.2	85.2	89.2	208.9	211.8	224.2	224.2	55.5	56.5	40.2	44.1	19.5	19.5	6	6	5200	6100	5500	6100	
	X30/3N470	185.0	87.2	91.1	214.8	217.7	232.1	232.1	57.5	58.5	42.1	46.1	19.5	19.5	6	6	4900	5800	5200	5800	
	X30/3N500	196.9	91.1	95.1	226.6	229.5	241.9	241.9	61.4	62.4	46.1	50.0	19.5	19.5	6	6	4600	5500	5200	5800	
	X30/3N550	216.5	99.0	101.0	246.3	249.2	261.6	261.6	69.3	68.3	53.9	55.9	19.5	19.5	3	6	3700	4400	4800	5300	

With sideshifter minus 440 lb,with integral sideshifter minus 220 lb.

XF series wide view mast

	Model	Max. fork height	Lowered height	Extended with backrest	Extended without backrest	Free lift with backrest	Free lift without backrest
		inch	inch	inch	inch	inch	inch
4000-5000lbs	X25D400-000000-000	157	80	199	185	39	53
	X25D430-000000-000	169	84	211	196	42	57
	X25D450-000000-000	177	86	219	204	45	59
	X25D470-000000-000	185	89	227	212	48	62
	X25D480-000000-000	189	90	231	216	49	63
	X25D500-000000-000	197	93	238	224	52	66
	X25D550-000000-000	217	101	258	245	60	75
	X25D600-000000-000	236	108	278	265	67	81
	X25D650-000000-000	256	115	297	285	73	88
	X25D700-000000-000	276	121	317	305	80	94
6000lbs	X30D400-000000-000	157	80	203	187	35	51
	X30D430-000000-000	169	84	215	199	39	55
	X30D450-000000-000	177	87	223	207	42	57
	X30D470-000000-000	185	89	230	215	44	60
	X30D480-000000-000	189	91	234	219	46	61
	X30D500-000000-000	197	93	242	227	49	64
	X30D550-000000-000	217	102	262	247	57	72
	X30D600-000000-000	236	108	282	266	63	79
	X30D650-000000-000	256	115	301	286	70	86
	X30D700-000000-000	276	122	321	306	77	92
7000lbs	X35D400-000000-000	157	82	203	190	37	50
	X35D430-000000-000	169	86	215	202	41	54
	X35D450-000000-000	177	89	223	210	44	57
	X35D470-000000-000	185	92	230	218	47	59
	X35D480-000000-000	189	93	234	222	48	60
	X35D500-000000-000	197	96	242	230	51	63
	X35D550-000000-000	217	102	262	250	57	70
	X35D600-000000-000	236	111	282	269	66	78
	X35D650-000000-000	256	118	301	289	73	85
	X35D700-000000-000	276	124	321	309	79	92



**Environment/
Efficiency/
Economy**





HC FORKLIFT AMERICA CORPORATION

Company address:

10405-A Granite Street Charlotte,
NC 28273

Toll Free: 888-652-8395

Phone: 980-888-8335

Fax: 980-888-8336

america@hcforklift.com

www.hcforkliftamerica.com



ISO14001:2015



ISO9001:2015



Follow us on
Facebook



Follow us on
YouTube



Follow us on
WeChat

HANGCHA GROUP CO., LTD. reserves the right to make any changes without notice concerning colors, equipment, or specifications detailed in this brochure, or to discontinue individual models. The colors of trucks, delivered may differ slightly from those in brochures.